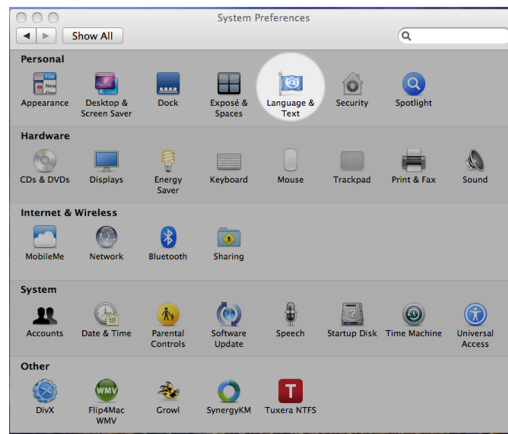


# How to enable the U.S Extended to type Chinese Pinyin



1. Select the Apple Menu, System Preference

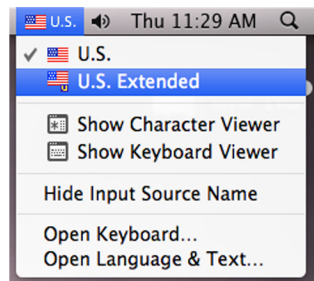


2. In System Preference Select Languages & Text

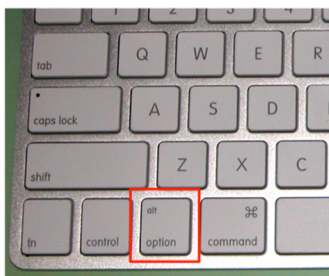


3. In Language & Text:

- Click Input Sources
- Select U.S Extended



4. Finally your able to use Keyboard by selecting the US flag on the top right Corner



Once U.S Extended keyboard is on, your then able to type pinyin tone marks with combination of keys. Utilizating the option key located here

Tone	Combination	Example	Result
1 <sup>st</sup> tone	Option key + a then letter	Option key + a then a	ā
2 <sup>nd</sup> tone	Option key + ` then letter	Option key + ` then a	à
3 <sup>rd</sup> tone	Option key + v then letter	Option key + v then a	ǎ
4 <sup>th</sup> tone	Option key + e then letter	Option key + e then a	á
Trema	Option key + u then letter	Option key + u then u	ü